

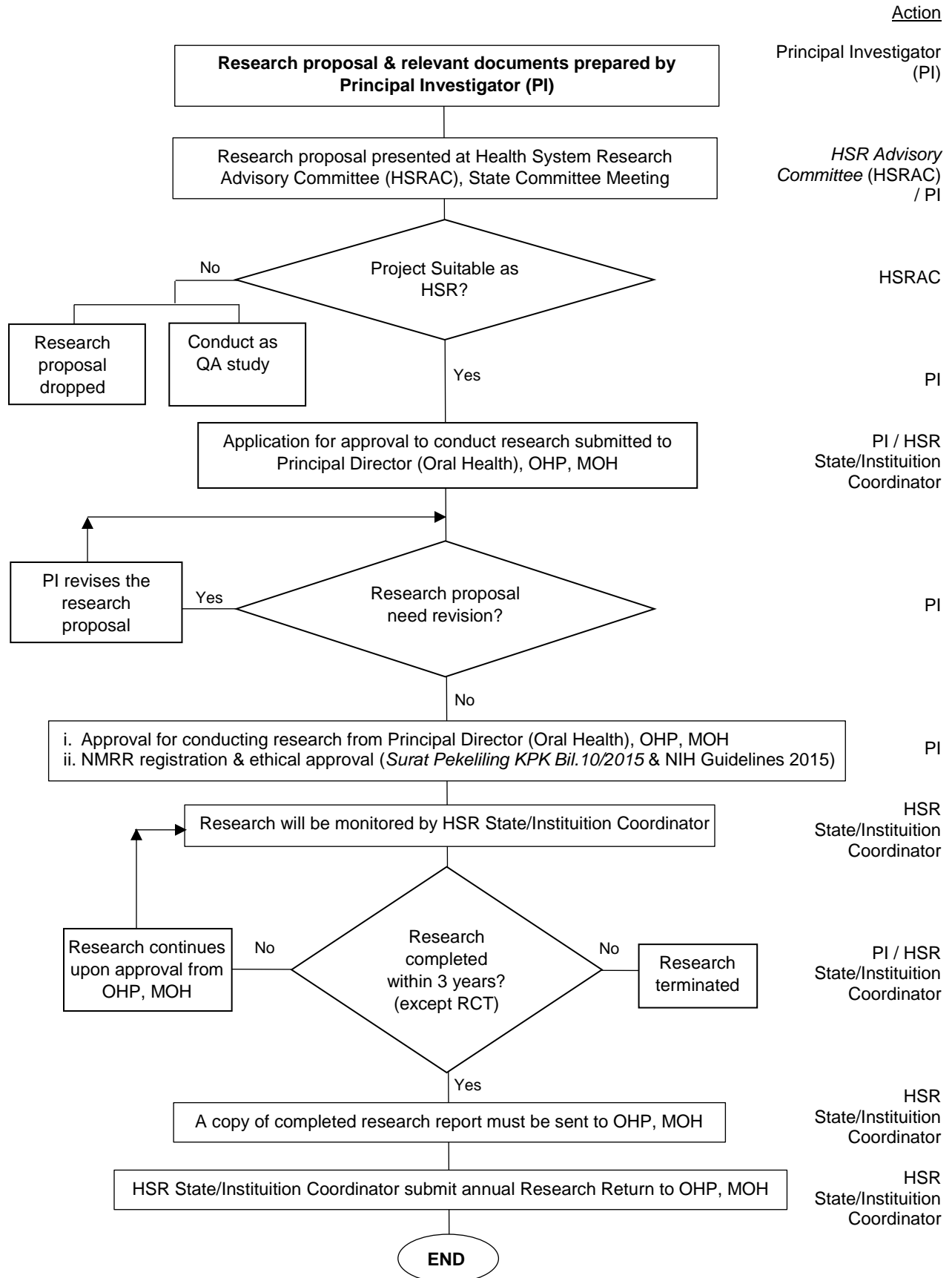
GUIDELINES FOR CONDUCTING RESEARCH IN ORAL HEALTH FACILITIES, MINISTRY OF HEALTH (MOH)

This guidelines aim to explain the procedure related to the implementation of oral health research at oral health facilities, MOH.

This guidelines includes:

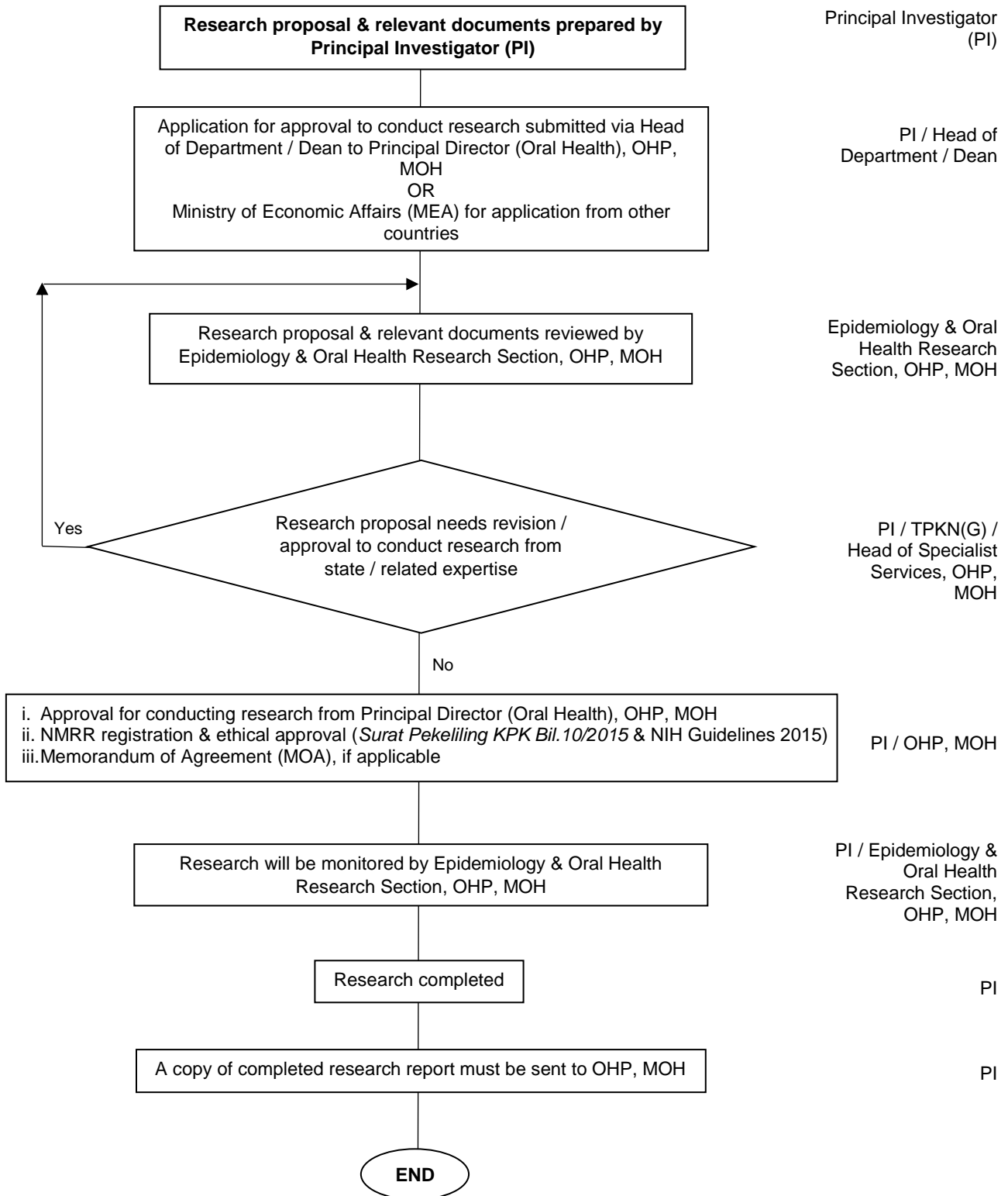
- i. Application from MOH personnel including research funded by an MOH / other Government Agency research grant.
- ii. Application from non-MOH personnel from local / overseas including universities or other agencies.
- iii. Application from post-graduate students (MOH personnel) at local / overseas universities.

i. Application from MOH personnel including research funded by an MOH / other Government Agency research grant



ii. Application from non-MOH personnel from local / overseas including universities or other agencies

Action



iii. Application from post-graduate students (MOH personnel) at local / overseas universities

